

→ For more on how you can access Primal Pictures' Anatomy.tv, please contact theteam@tetondata.com

Specialty content powered by the
world's most accurate 3D digital anatomical model



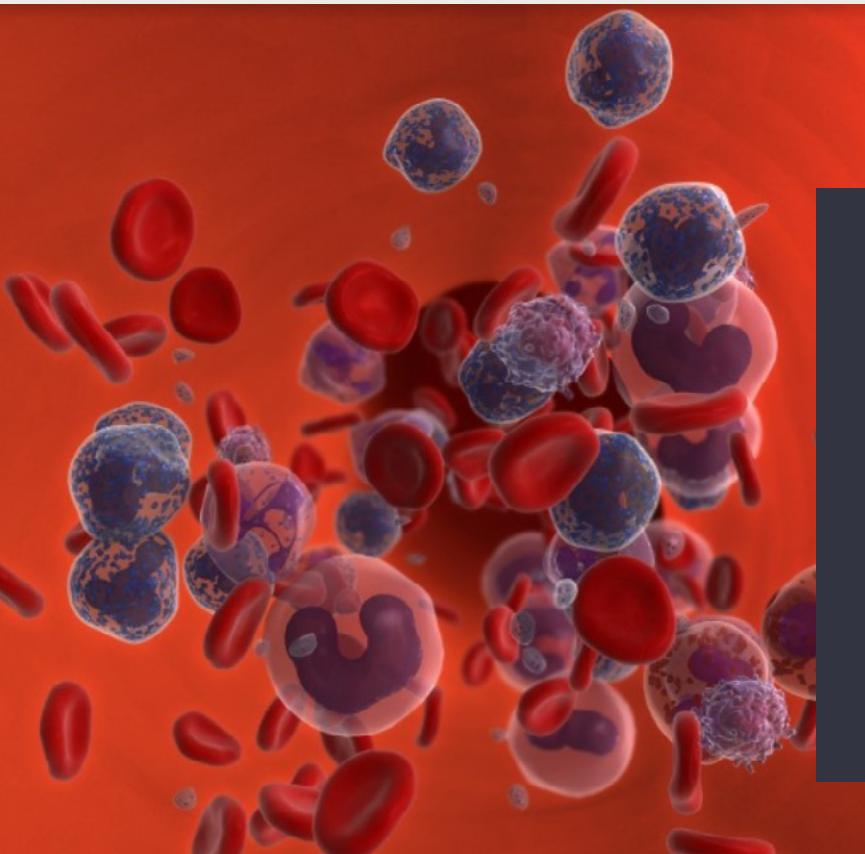
NURSING & MIDWIFERY SOLUTION

This tailored package is the ultimate resource for nurses, providing a solid foundation in the principles of anatomy, physiology and pathology to understand body systems and facilitate outstanding patient care.

Built by specialists, purposefully curated for nursing and sourced from the most anatomically correct model on the market.

Primal's Nursing & Midwifery Solution delivers course-specific content – all embeddable into a learning management system. This package provides:

- 🔗 Dynamic and interactive 3D models to visualize gross and microanatomy
- 🔗 Informative videos and case studies demonstrating how disease affects anatomy and physiology
- 🔗 Explanatory text and animations to relate structure to function
- 🔗 Quizzing and activities for self-testing and study



**Request a demo or free trial today
and ask us about our other Primal
Solutions packages:**

- 🔗 Medical
- 🔗 Dental
- 🔗 Healthcare
- 🔗 PT & Sports Science
- 🔗 Speech & Language

Compatible with: macOS, iOS, Windows and Android.



Anatomy.tv is a great resource during A&P I and II. Especially for visual learners, it is a great tool to be used as an additional technique to study for exams.

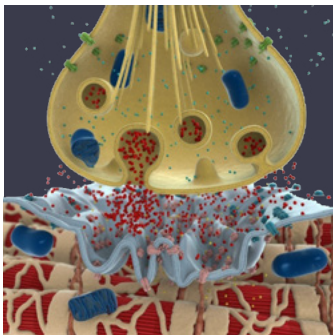
Gina - Nursing Student, Colby Sawyer College



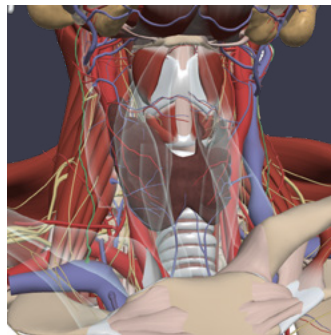
A lot of students say the e-books aren't giving them what they need. They need tools like Anatomy.tv that help them visualize and really immerse themselves in the content.

Sarah Howard - Liaison Librarian and Project Officer (nursing),
Queensland University of Technology

Nursing & Midwifery Solution includes:



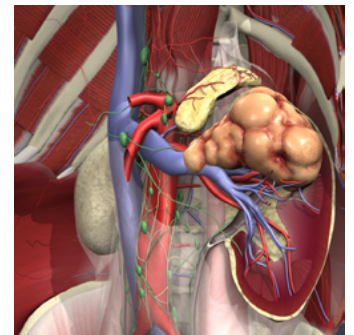
Human Anatomy
and Physiology



3D Real-time
(whole body)



3D Anatomy Quiz App



Disease & Conditions

This package is specifically designed to support and enhance your students' learning journey every step of the way:

